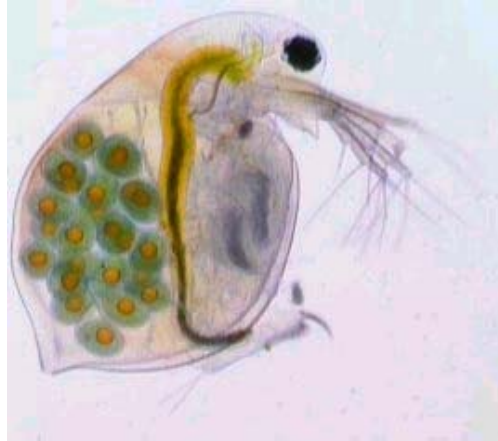


Daphnia

Latin name: *Daphnia species*

Also known as: Water flea



Feeds on: Algae

Is eaten by: Carnivores such as water mites and phantom midge larvae.

Size: 1mm

Habitat: Open water, close to surface.

Oxygen adaptation: Absorb oxygen through their exoskeleton. They contain haemoglobin.

Did you know? When water fleas wave their legs they create a current of water. Their legs filter algae out of the water and pass it to their mouths.

In the summer female water fleas produce eggs without needing to mate. They give birth to live young after incubating them in their pouch. At the end of the summer some of the eggs that are left develop into males and fertilise the remaining eggs.



Egg pouch