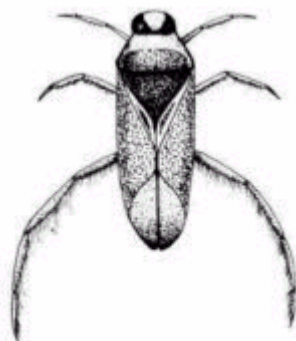


Greater Water Boatman

Latin name: *Notonecta glauca*



Feeds on: Mainly carnivorous, feeding on water fleas and mites. They can also feed on prey larger than themselves, such as tadpoles and small fish.

Is eaten by: Newts and ducks.

Size: Up to 16mm

Habitat: Open water.

Oxygen adaptation: When it comes to the surface it traps a bubble of air in bristles on its underside. It then carries the air bubble back down with it.

Did you know? The Greater Water Boatman tends to stay motionless at the surface until it detects movement. It then swims to its prey (on its back!) and injects toxic saliva into it.

It is easy to tell the difference between a Lesser and Greater Water Boatman. Lesser's swim on their front, while Greater's are back swimmers.