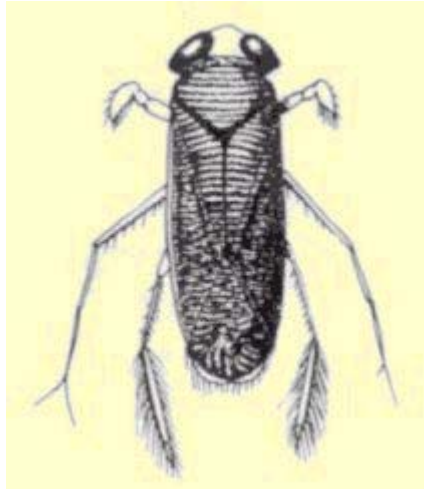


Lesser Water Boatman

Latin name:

Corixa punctata



Feeds on:

Algae and detritus.

Is eaten by:

Fish, newts and ducks.

Size:

Up to 16mm

Habitat:

Open water and pond margins.

Oxygen adaptation:

When it comes to the surface it traps a bubble of air in bristles on its underside. It then carries the air bubble back down with it.

Did you know?

Like the Greater Water Boatman, the Lesser is a powerful swimmer, using its back legs as paddles. It is easy to tell the difference between a Lesser and Greater Water Boatman. Lesser's swim on their front, while Greater's are back swimmers.



Young larvae